

# CERTIFICATE OF LOCATION OF GOVERNMENT CORNER

NORTHEAST Corner of Section 20, Township 107N, Range 40W

5th Principal Meridian, State of Minnesota, County of Murray.

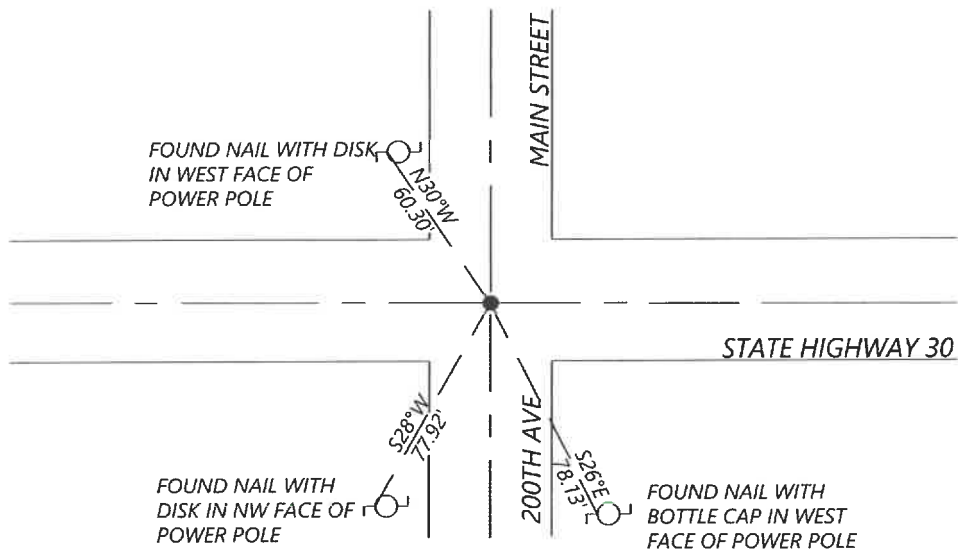
At the corner location shown on the sketch:

☒ On 10/15/2021 found a 3/4" IRON PIPE 0.2' BELOW THE ROAD SURFACE.  
DATE

☒ left monument as found ☐ lowered monument ☐ removed monument (explain)

☐ On \_\_\_\_\_ placed a \_\_\_\_\_  
DATE

## SKETCH OF REFERENCE TIES



N.T.S.

Statement of evidence for this corner location is on back of this page.

I hereby certify that this document was researched and prepared by me or under my direct supervision and that I am a licensed Land Surveyor under the laws of the State of Minnesota.

Signature [Signature]

Date 4-18-2022 License No. 57085

Title:

☒ Land Surveyor ☐ Professional Engineer  
☐ County Surveyor ☐ County Engineer

## OFFICE OF THE COUNTY RECORDER

County of Murray

I hereby certify that this document was filed in the Co.

Recorder's office at \_\_\_\_\_ M. on the  
2nd day of April A.D. 20 22

County Recorder [Signature]  
by \_\_\_\_\_, Deputy

DOCUMENT NO. \_\_\_\_\_

SETH WECKMAN  
Minnesota License No. 57085

**Statement of Evidence:**

Northeast corner of Section 20, Township 107 North, Range 40 West, 5th Principal Meridian, Murray County, Minnesota.

- 1861 Lewis Brockman, U.S. Deputy Surveyor, set a post in mound.
- 1953 Minnesota Department of Highways, Trunk Highway 30 Right of Way Map (S.P. 5103), shows the section corner at Int. Rds. North, South, East, & West, P.O.T. at St. 350+34.7
- 1998 Zieske Land Surveying, Perry Zieske (LS 23008) files a survey and has a note for this corner stating that he detected a signal on centerline-centerline, as per MnDOT plan.
- 2005 Zieske Land Surveying, Perry Zieske (LS 23008) files a survey and shows a found iron monument.
- 2005 Madsen Land Surveying, John Madsen (LS 13593), files a survey and shows a found 3/4" iron pipe in bit paving (surface).
- 2007 Zieske Land Surveying, Perry Zieske (LS 23008) files a survey and shows a found iron monument.
- 2008 Zieske Land Surveying, Perry Zieske (LS 23008) files a survey and shows a found iron monument.
- 2009 Madsen Land Surveying, John Madsen (LS 13593), files a survey and shows a found 3/4" iron pipe in bit paving (surface).
- 2010 Bueltel-Moseng Land Surveying, Daniel L. Bueltel (LS 43844), files a survey and shows a 3/4" pipe.
- 2021 Westwood Professional Services searched the area and found a 3/4" iron pipe, 0.2ft below the road surface. The monument was found at the intersection of the North/South/East/West road centerlines. The monument matches the distance shown to the East Quarter of Section 20 from the 2009 Madsen survey, as well as the distance shown to the East Quarter of Section 17 from the 2010 Bueltel survey. Found three reference ties of unknown origin. Accepting the found monument as the corner position.

*Analysis of the recovered data, field evidence and survey measurements, indicates that the monument found is the correct perpetuation of this corner. For additional information concerning this corner please contact Westwood Professional Services.*